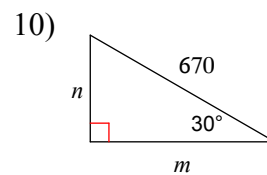
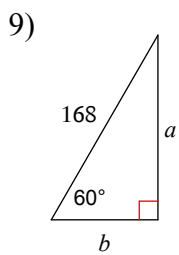
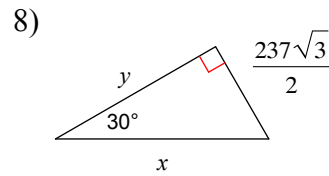
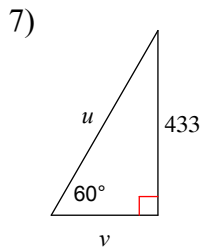
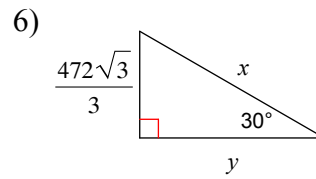
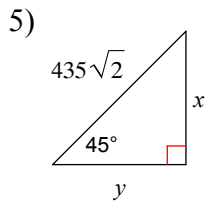
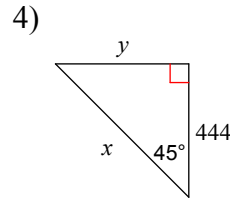
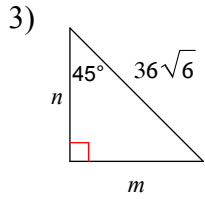
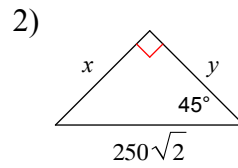
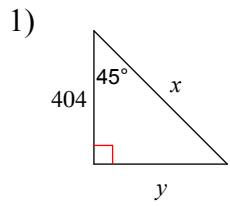


Special Right Triangles Extra Practice

Find the missing side lengths. Leave your answers as radicals in simplest form.



Answers to Special Right Triangles Extra Practice (ID: 1)

1) $x = 404\sqrt{2}$, $y = 404$

3) $m = 36\sqrt{3}$, $n = 36\sqrt{3}$

5) $x = 435$, $y = 435$

7) $u = \frac{866\sqrt{3}}{3}$, $v = \frac{433\sqrt{3}}{3}$

9) $a = 84\sqrt{3}$, $b = 84$